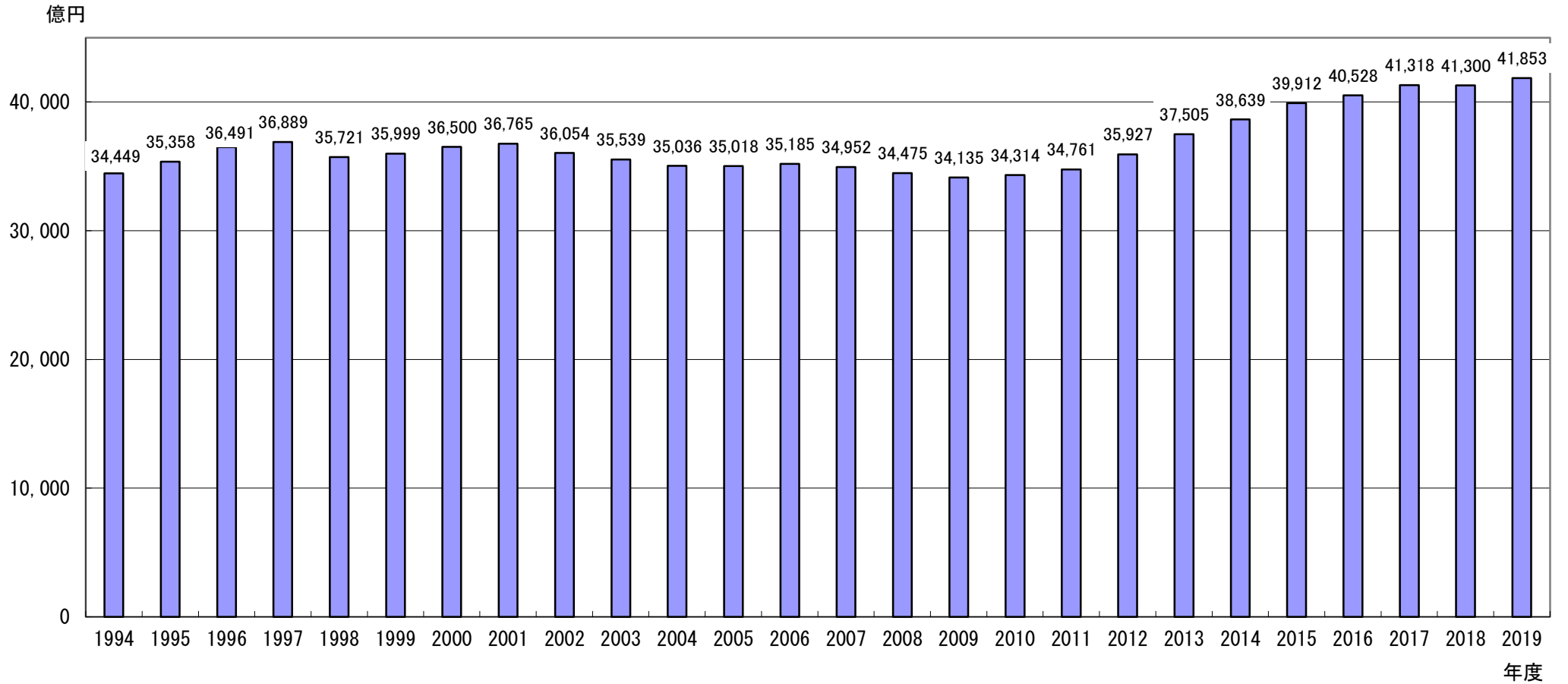


## 自動車保険元受正味保険料の推移



自動車保険元受正味保険料の推移

年度	金額(億円)	増減率(%)
1994	34,449	4.6
1995	35,358	2.6
1996	36,491	3.2
1997	36,889	1.1
1998	35,721	△ 3.2
1999	35,999	0.8
2000	36,500	1.4
2001	36,765	0.7
2002	36,054	△ 1.9
2003	35,539	△ 1.4
2004	35,036	△ 1.4
2005	35,018	△ 0.1
2006	35,185	0.5
2007	34,952	△ 0.7
2008	34,475	△ 1.4
2009	34,135	△ 1.0
2010	34,314	0.5
2011	34,761	1.3
2012	35,927	3.4
2013	37,505	4.4
2014	38,639	3.0
2015	39,912	3.3
2016	40,528	1.5
2017	41,318	1.9
2018	41,300	△ 0.0
2019	41,853	1.3